

# VERSETTA STONE®



**THE BEAUTY OF STONE**  
THE SIMPLICITY OF SIDING

# VERSETTA STONE® SIDING

## THE ORIGINAL ARTISAN-CRAFTED STONE PANEL

Backed by decades in the manufactured stone industry, Versetta Stone® is the only siding to master the true look of hand-laid stone walls with panels that offer virtually undetectable joints. Whether it's for interior or exterior applications, natural shapes and handcrafted details give siding pros and DIYers a decided edge in achieving world-class design that feels warm and epic all at once.





Ledgestone In Sand



Ledgestone In Mission Point

# STONE DIMENSION AND PRESENCE

- **Delivers the elegant look of stone**
- **Adds timeless texture and visual interest**
- **Offered in a curated collection of popular colors**
- **Features natural shapes and handcrafted details**
- **Adaptable for both interior and exterior applications**
- **Takes home design to the next level**







# **ENGINEERED**

## FOR SIMPLE INSTALLATION

- **Tongue and groove interlocking panels install mechanically with nails or screws**
- **No mortar required, so it can be installed in any weather**
- **Easy for contractors or DIYers to work with**
- **System of flat panels, corner panels, wainscot sills and accessories**
- **No metal lath or scratch coat necessary to install**
- **Built-in rain screen to ensure proper water drainage**
- **Pre-drilled weep holes allow water to escape**
- **Each panel covers 2 square feet**



# VERSETTA STONE®

## THE INNOVATION RUNS DEEP

From new construction to remodeling, exterior facades to stunning interiors, Versetta Stone® adds the beautiful detail of traditional stone masonry to residential and commercial buildings. With a modern installation method, Versetta Stone offers a complete system founded on quality, selection and speed.

### ENGINEERED FOR THE LONG HAUL

- **Patented stone panels and system**
- **Withstands freeze and thaw cycles†**
- **Fiber-reinforced concrete for strength**
- **Resists hurricane-force winds**
- **ICC Evaluation Service Report ESR-2859**

### MADE FOR PEACE OF MIND

- **50-Year Warranty**
- **Certified to contain at least 50% recycled content**
- **Flame Spread Index and Smoke Developed Index of 0**

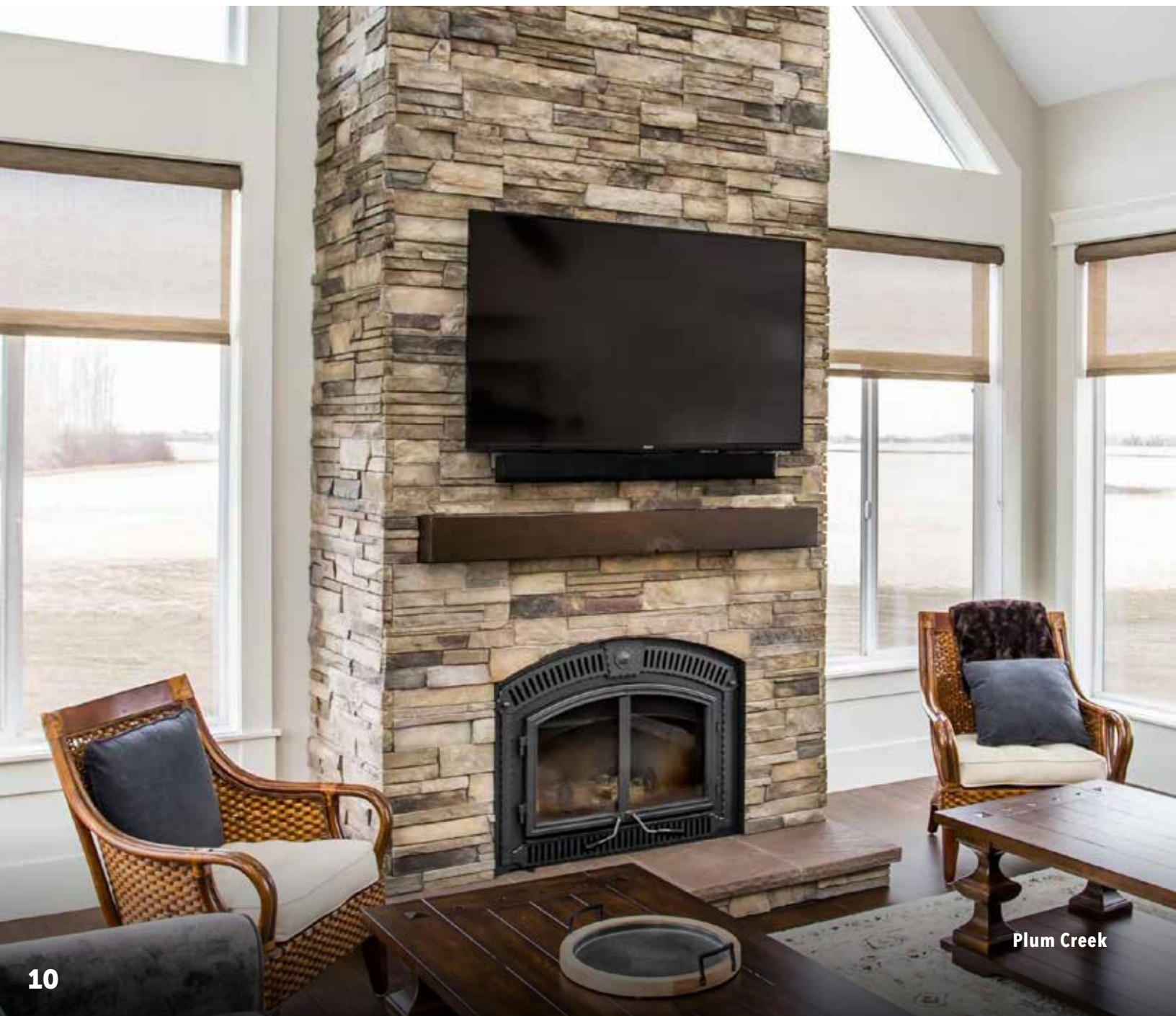
†See Versetta Stone® Product Data Sheet for proprietary test results, located at [VersettaStone.com](http://VersettaStone.com)





# LEDGESTONE

Its signature traditional dry stack or sandstone look complements many home styles. Staggered layers and a rough-cut appearance balance other materials like brick, stucco and wood. Rugged texture and purposeful irregularity give it a well-worn look that suggests years in the elements.







Mission Point



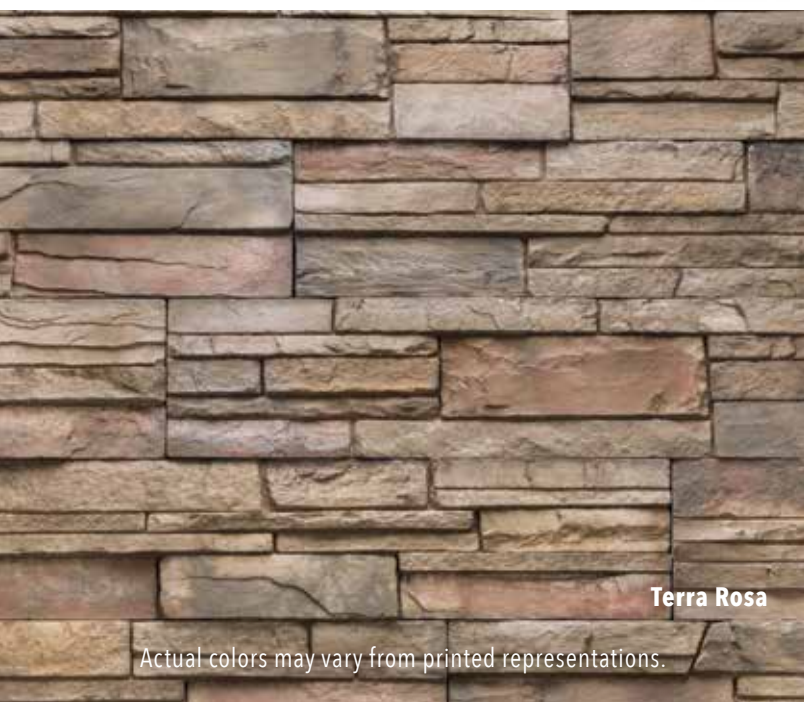
Plum Creek



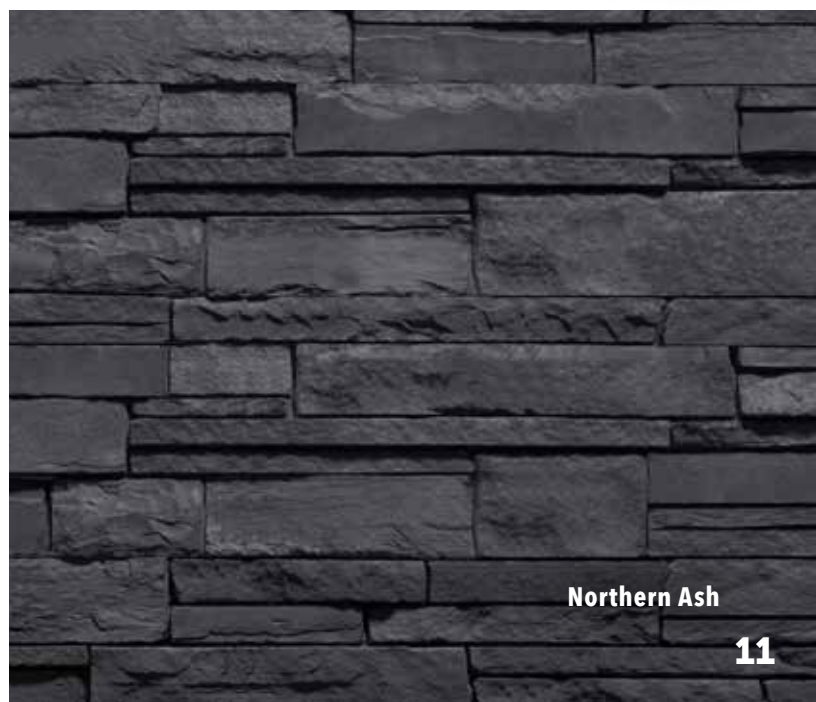
Sand



Sterling



Terra Rosa



Northern Ash

Actual colors may vary from printed representations.





Mission Point



Plum Creek



Sand



Sterling



Terra Rosa



Northern Ash



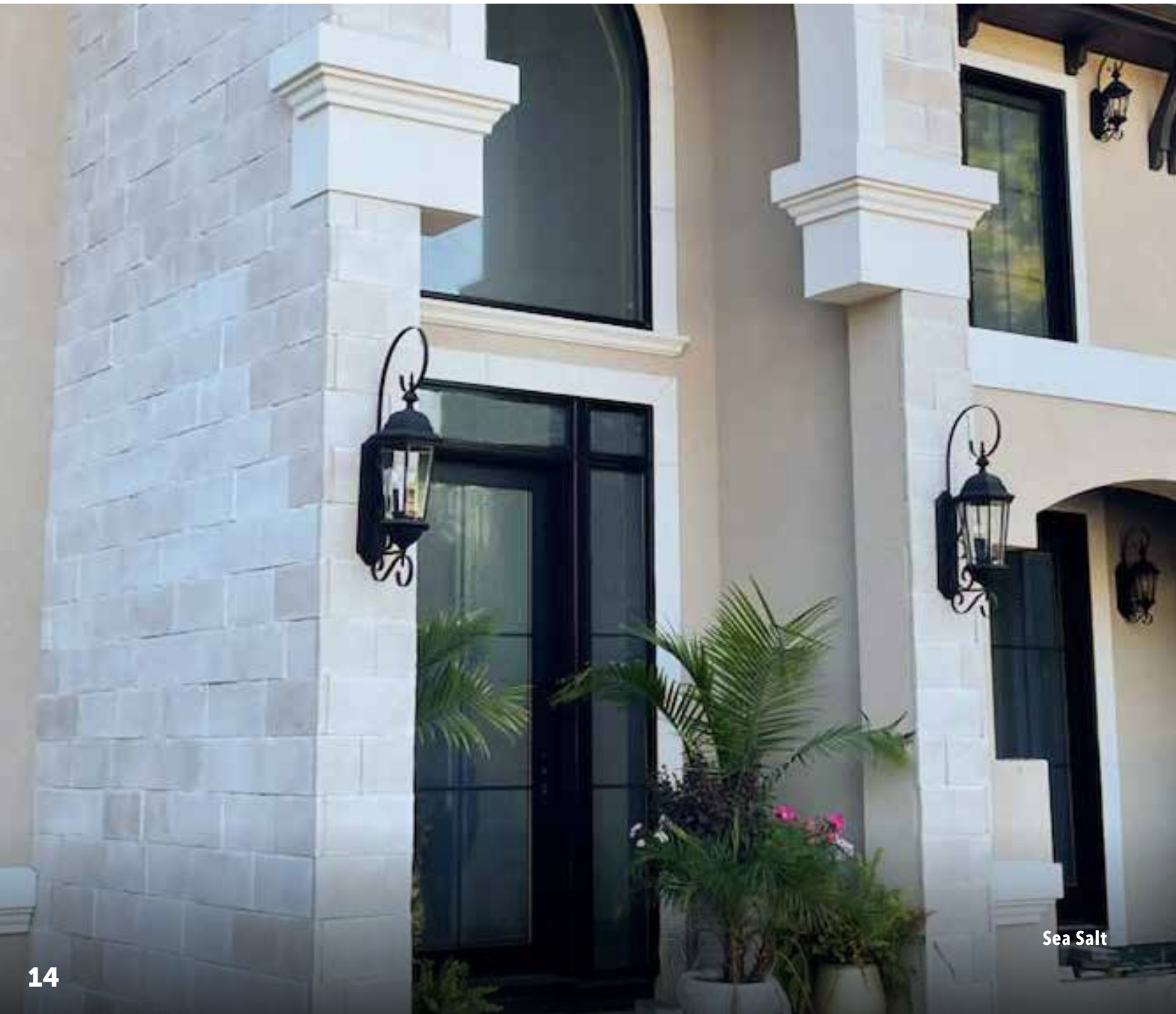
# TIGHT-CUT

With its traditional look of random ashlar or quarried limestone, this profile fits tightly together to emulate rural 19th century American architecture. Use it inside for an accent wall or fireplace, or outside around a patio or pool.



# CARVED BLOCK

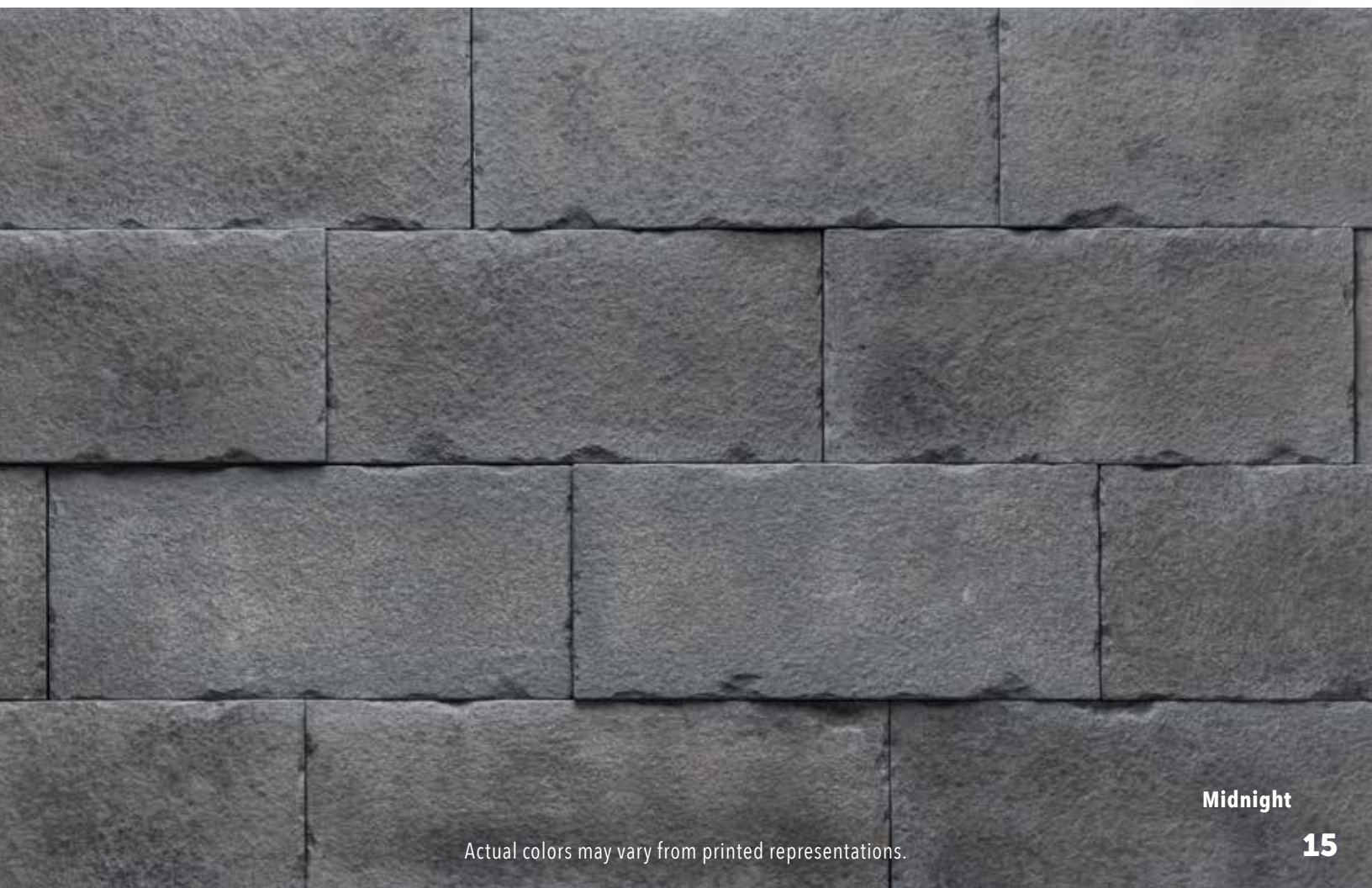
A great fit for contemporary and commercial designs, Carved Block combines larger stones in various sizes with a chiseled texture to mimic split face stone. Panels are 1½" thick.







Sea Salt



Midnight

Actual colors may vary from printed representations.



# EXTERIOR APPLICATIONS







**Tight-Cut In** Terra Rosa



**Tight-Cut In** Plum Creek



**Tight-Cut In** Sterling



**Ledgestone In** Mission Point



# INTERIOR APPLICATIONS



Tight-Cut In Northern Ash





Ledgestone In Sand



Tight-Cut In Northern Ash



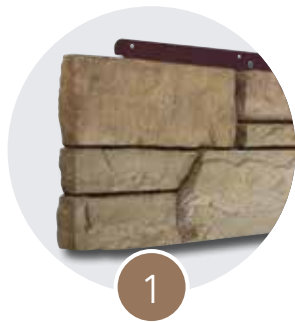
Ledgestone In Mission Point



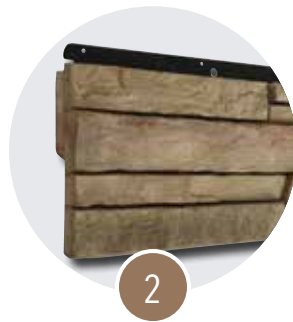


# THE VERSETTA STONE® SYSTEM

FROM START TO FINISH, THE COMPLETE SYSTEM FOR YOUR NEXT PROJECT



Universal Corner



Flat Panel



Trim Stone



Light Box



J-Channel



Starter Strip





Ledgestone In Plum Creek



4  
Wainscot Cap/Sill



5  
Receptacle Box



Fastening Screws\*



Large Light Box



Textured Finishing Adhesive

\*Not available in other colors.

# EVERYTHING YOU NEED FOR A PERFECT FINISH

Mortarless panels are designed for quick and easy installation using mechanical fasteners.



## FLAT PANEL

- Panel exposure size is 36" x 8"
- Covers two square feet per panel
- Uses four screws per panel
- Each flat panel embedded with a G-90 galvanized nail strip\*

\*Includes a 50-year corrosive-resistant warranty.



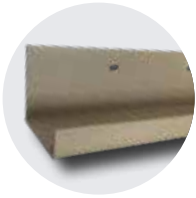
## UNIVERSAL CORNER

- Corner panel size is 36" x 8"
- Same size and shape as flat panel
- Features finished edges
- For use on end wall terminations, inside and outside corners and columns





Versetta Stone® accessories make it simple to create a fully finished look without extra hassles or wasted time. Every component, from corners and sills to receptacle boxes to fasteners and adhesives, works as a system with our stone siding panels. Made with the same premium materials and in coordinating styles, colors and textures, our accessory system ensures you have what it takes to achieve perfect and professional-looking results—all in one place.



**J-CHANNEL**

10' Length



**STARTER STRIP**

10' Length



**WAINSCOT CAP/SILL**

36" x 3-1/2"  
2.6" Exposure / 3" Thickness



**TRIM STONE**

36" x 9-1/2"  
8.2" Exposure



**LIGHT BOX**

10" x 8"  
1-3/4" Thickness



**RECEPTACLE BOX**

8" x 6"  
1-3/4" Thickness



**LARGE LIGHT BOX**

9.5" x 15"  
1.75" Thickness



**FASTENING SCREWS**

10 x 1-5/8" (not for application over insulation)  
10 x 2-1/4" (meant for applications over 1" insulation)  
Made of case hardened carbon steel  
Ideal for interior and exterior applications  
Tight Star Recess system grasps the U-Bit tightly



**TEXTURED FINISHING ADHESIVE**

Coarse texture blends with mortarless stone siding panels. Perfect for small aesthetic repairs or odd material terminations. Bonds well to metal coil stock for partial panel and accessory installations.



Taupe



Stone Grey



Charcoal



# BOUNDLESS™

Where some see boundaries, Westlake Royal Building Products™ sees opportunities to drive innovation, elevate design and deliver solutions that redefine the industry. Our comprehensive selection of products, materials and widely expressive color palettes and textures meet any home demand—inside and out, East Coast to West. Giving everyone the tools and technology to transform spaces into anything they want. This is our mission. And it's Boundless™.



SIDING & ACCESSORIES

TRIM & MOULDINGS

ROOFING

STONE

WINDOWS

OUTDOOR LIVING

