

TruExterior[®]

Siding & Trim





So Authentic. So Reliable. Nothing Compares.

TruExterior® Siding & Trim is a true innovation, invented to address issues common with other exterior products in the industry. It's a siding material that offers a high level of dimensional stability to help reduce expansion and contraction. Plus, TruExterior resists water, making it ideal for applications with ground or masonry contact. TruExterior gives builders the freedom to build beautiful homes with confidence.

Pictured: Shiplap, Channel Bevel
On the Cover: Nickel Gap, Channel





WARNING

CAUTION



Phenomenal Performance. Remarkable Workability.

TruExterior® Siding & Trim offers both and a lasting look while eliminating the need for gluing, gapping and other cumbersome and costly installation techniques.

APPLICATION

- Designed for use in non-structural applications
- Suitable for ground and masonry contact
- Can be used in moisture-prone areas
- Installation is the same regardless of the season

TOOLS

- Installed using proven woodworking tools and methods
- Carbide-tipped blades and bits are recommended for a longer tool life

FASTENING

- Accepts common high-quality, exterior-grade fasteners that are suitable for the local environment
- Can be fastened close to the edge
- No need for pre-drilling
- No mushrooming

DURABILITY

- WUI listed
- No need to prime ends or field cuts
- Resists rot and termite attacks*
- No excessive swelling*

PAINTING

- TruExterior® products come pre-primed and do require paint
- No need to prime end cuts
- Can be painted with any high-grade exterior paint when following the paint manufacturer's instructions
- Dimensionally stable, promoting long-lasting paint adhesions, even with dark colors*
- Virtually no moisture cycling, paint lasts longer than on wood*
- Traditional exterior-grade caulks or exterior-grade wood fillers are all acceptable for filling nail holes

BEAUTY

- Tighter gaps, minimal movement—it will move less than PVC and vinyl
- Truly historically accurate profiles—get the look of traditional, authentic wood profiles
- True look of cedar siding profiles, real architectural detail

WARRANTY

- 20 year limited warranty

*Please see TruExterior® Siding & Trim Limited Warranties and Product Data Sheets for proprietary test results, located at TruExterior.com. Always follow local building codes and construction best practices. See the complete Installation Guidelines for TruExterior® Siding & Trim at TruExterior.com.

Pictured: Channel Bevel



Pictured: Nickel Gap



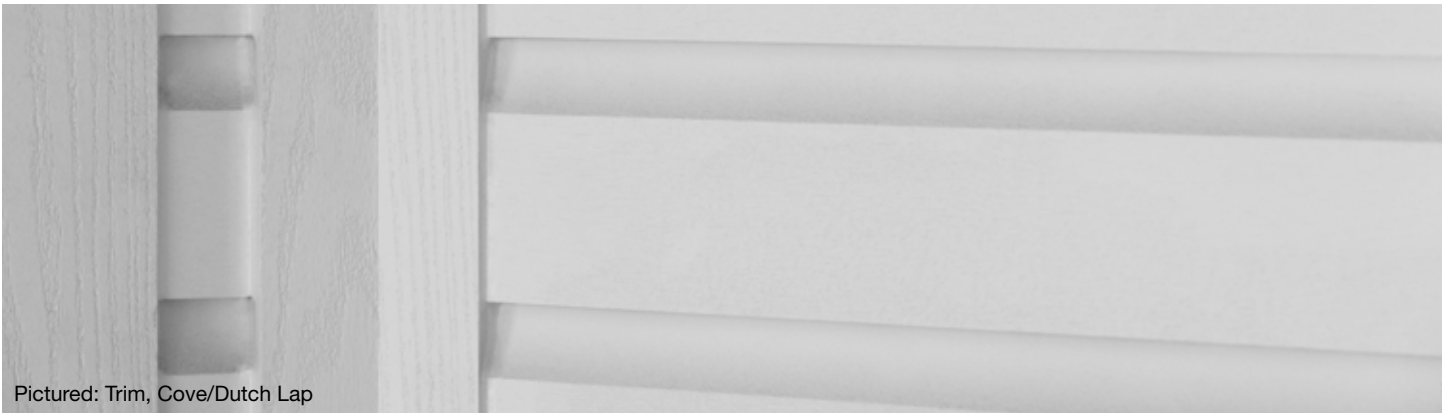
Pictured: Nickel Gap, Trim



Pictured: Channel, Board-and-Batten



Pictured: Nickel Gap, Board-and-Batten



Pictured: Trim, Cove/Dutch Lap



Pictured: Nickel Gap



Pictured: Trim



Pictured: Cove/Dutch Lap



Pictured: Cove/Dutch Lap

Craftsman Collection™

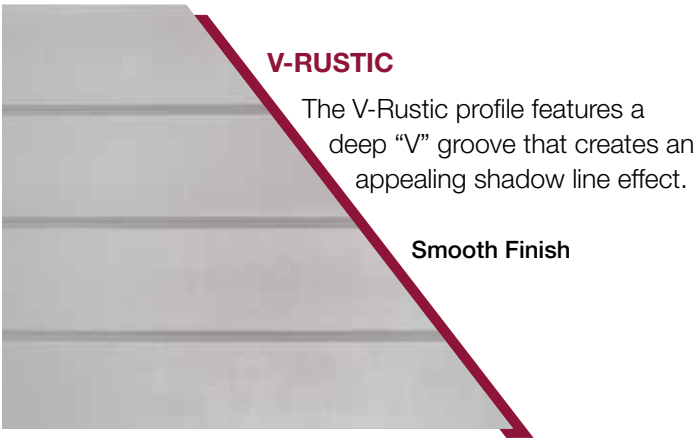
The TruExterior® Siding Craftsman Collection™ offers a variety of authentic, full-thickness profiles with bold, defined shapes and the natural aesthetic of traditional wood siding, all without the maintenance and upkeep associated with exterior wood products.

Historically and architecturally accurate profiles—Channel, Channel Bevel, Cove/Dutch Lap, Nickel Gap, Shiplap and V-Rustic—are the ideal solution for homeowners who desire the look, feel and character of authentic wood siding while avoiding rotting, excessive swelling and termite attacks.



Pictured Top Left to Right: Channel Bevel, Nickel Gap

Pictured Bottom Left to Right: Nickel Gap, Channel Bevel

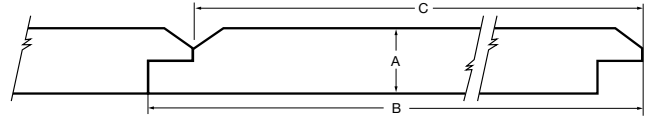


V-RUSTIC

The V-Rustic profile features a deep “V” groove that creates an appealing shadow line effect.

Smooth Finish

Nominal Size	Actual Thickness (A)	Actual Width (B)	Reveal (C)
1 x 6	11/16"	5-1/2"	5"
1 x 8	11/16"	7-1/2"	7"
1 x 10	11/16"	9-1/2"	9"

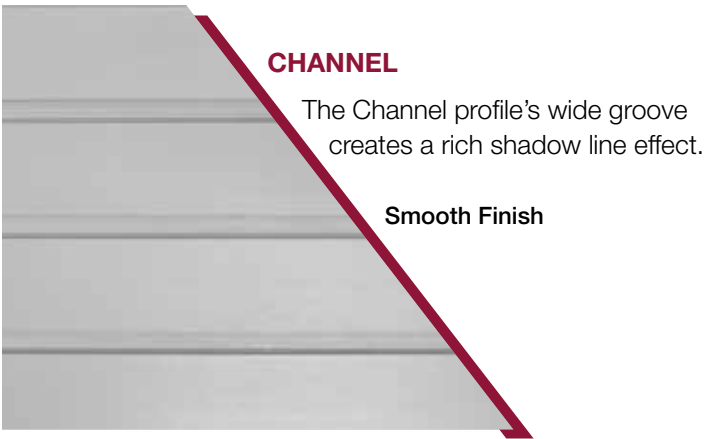
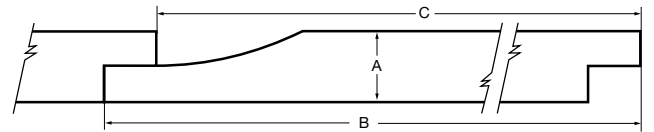


COVE/DUTCH LAP

The Cove/Dutch Lap profile features a subtle curve that creates a unique, eased appearance.

Smooth Finish

Nominal Size	Actual Thickness (A)	Actual Width (B)	Reveal (C)
1 x 6	11/16"	5-1/2"	4-31/32"
1 x 8	11/16"	7-1/4"	6-23/32"
1 x 10	11/16"	9-1/4"	8-23/32"

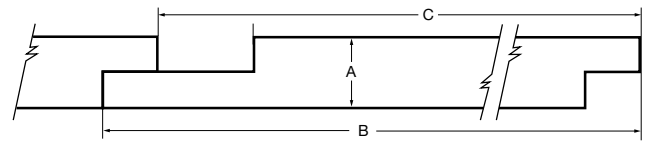


CHANNEL

The Channel profile’s wide groove creates a rich shadow line effect.

Smooth Finish

Nominal Size	Actual Thickness (A)	Actual Width (B)	Reveal (C)
1 x 6	11/16"	5-1/2"	4-31/32"
1 x 8	11/16"	7-1/4"	6-23/32"
1 x 10	11/16"	9-1/4"	8-23/32"

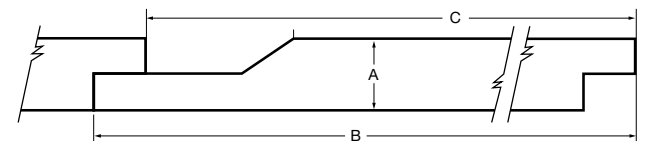


CHANNEL BEVEL

The Channel Bevel profile features a channel-style joint with an angled edge.

Smooth Finish

Nominal Size	Actual Thickness (A)	Actual Width (B)	Reveal (C)
1 x 6	11/16"	5-1/2"	4-31/32"
1 x 8	11/16"	7-1/2"	6-31/32"
1 x 10	11/16"	9-1/2"	8-31/32"



TruExterior Siding comes pre-primed and does require paint.

REVERSIBLE SHIPLAP-NICKEL GAP

TruExterior Siding & Trim's Reversible Shiplap/Nickel Gap siding panels offer two authentic, on-trend looks in one for increased versatility and convenience. The profile comes in two formats: one features smooth Nickel Gap on one side and woodgrain Shiplap on the other; the second combines woodgrain Nickel Gap with smooth Shiplap on the flip side. A rabbeted edge ensures panels install with authentic spacing depending on which side is installed—the tight joint appearance of Shiplap or the nickel-sized space of Nickel Gap. Four widths are available for 16 total profile combinations.

Finish Options:

- Smooth Nickel Gap with Woodgrain Shiplap
- Woodgrain Nickel Gap with Smooth Shiplap



Pictured: Smooth Nickel Gap



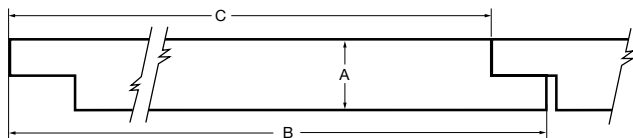
SMOOTH NICKEL GAP/WOODGRAIN SHIPLAP



WOODGRAIN NICKEL GAP/SMOOTH SHIPLAP

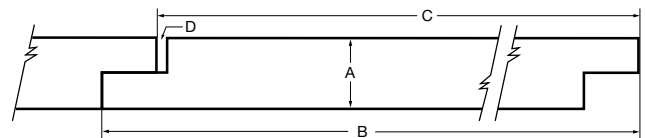
SHIPLAP GAP SIDE

Nominal Size	Actual Thickness (A)	Actual Width (B)	Reveal (C)
1 x 4	11/16"	3-1/2"	3-3/32"
1 x 6	11/16"	5-1/2"	5-3/32"
1 x 8	11/16"	7-1/4"	6-13/16"
1 x 10	11/16"	9-1/4"	8-13/16"



NICKEL GAP SIDE

Nominal Size	Actual Thickness (A)	Actual Width (B)	Reveal (C)	Gap (D)
1 x 4	11/16"	3-1/2"	3-3/32"	5/64"
1 x 6	11/16"	5-1/2"	5-3/32"	5/64"
1 x 8	11/16"	7-1/4"	6-13/16"	5/64"
1 x 10	11/16"	9-1/4"	8-13/16"	5/64"



TruExterior Siding comes pre-primed and does require paint.



Beadboard

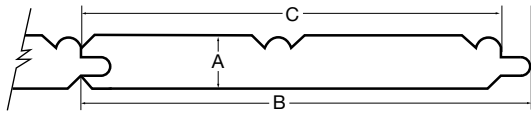
Including single and double profiles, TruExterior® Beadboard is ideal for porch ceilings, soffits and decorative wall applications, and allows for a variety of installations, as it can be attached in either parallel or perpendicular directions.

Its “tongue-and-groove” design results in a clean look that can be reversed to offer a contemporary “V-groove” appearance.



Pictured: Beaded Pattern

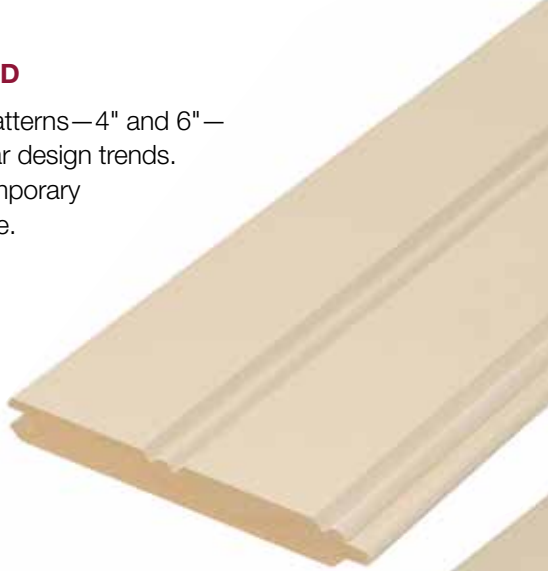
Nominal Size	Actual Thickness (A)	Actual Width (B)	Reveal (C)
5/8 x 4	5/8"	3-15/32"	3-5/32"
5/8 x 6	5/8"	5-5/16"	4-15/16"



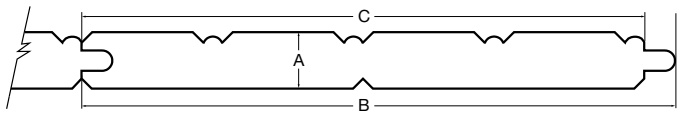
SINGLE BEADBOARD

Two distinct beaded patterns—4" and 6"—to suit the most popular design trends. Reversible for a contemporary “V-Groove” appearance.

Smooth Finish



Nominal Size	Actual Thickness (A)	Actual Width (B)	Reveal (C)
5/8 x 8	5/8"	6-9/16"	6-7/32"
5/8 x 12	5/8"	10-1/4"	9-29/32"



DOUBLE BEADBOARD

The same appearance as the single-profile products, but with twice the coverage. Reversible for a contemporary “V-Groove” appearance.

Smooth Finish




TruExterior Beadboard comes pre-primed and does require paint.



Trim

Designed to be used in non-load-bearing applications, TruExterior® Trim is suitable for ground and masonry contact and moisture-prone areas, which makes it ideal for exterior trim applications such as fascia, door trim, soffits, rake boards and a variety of other applications. There is no need to prime ends or field cuts. Plus, it can be painted any color. TruExterior® Trim accepts common high-quality, exterior-grade fasteners and can be installed using standard woodworking tools and methods.





5/8 Trim Sizes		1X Trim Sizes		5/4 Trim Sizes		2X Trim Sizes	
Nominal	Actual	Nominal	Actual	Nominal	Actual	Nominal	Actual
—	—	—	—	—	—	2 x 2	1-1/2" x 1-1/2"
—	—	1 x 3	3/4" x 2-1/2"	5/4 x 3	1" x 2-1/2"	—	—
5/8 x 4	5/8" x 3-1/2"	1 x 4	3/4" x 3-1/2"	5/4 x 4	1" x 3-1/2"	2 x 4	1-1/2" x 3-1/2"
—	—	1 x 5	3/4" x 4-1/2"	5/4 x 5	1" x 4-1/2"	—	—
5/8 x 6	5/8" x 5-1/2"	1 x 6	3/4" x 5-1/2"	5/4 x 6	1" x 5-1/2"	2 x 6	1-1/2" x 5-1/2"
5/8 x 8	5/8" x 7-1/4"	1 x 8	3/4" x 7-1/4"	5/4 x 8	1" x 7-1/4"	2 x 8	1-1/2" x 7-1/4"
5/8 x 10	5/8" x 9-1/4"	1 x 10	3/4" x 9-1/4"	5/4 x 10	1" x 9-1/4"	2 x 10	1-1/2" x 9-1/4"
5/8 x 12	5/8" x 11-1/4"	1 x 12	3/4" x 11-1/4"	5/4 x 12	1" x 11-1/4"	2 x 12	1-1/2" x 11-1/4"

TruExterior® Trim is reversible with woodgrain on one side and a smooth finish on the reverse. Available in a 16' length.

Reversible Smooth/Woodgrain Finish

BOARD-AND-BATTEN SIDING

Whether a Modern Farmhouse design or creating accents on a gable, board-and-batten is one of the hottest trends in home exterior design. And it's easy to create the board-and-batten look using just TruExterior Trim.



TruExterior Trim comes pre-primed and does require paint.

Accessories

TruExterior® Siding & Trim Accessories make it easy to create polished, professional-looking siding and trim installations. Decorative yet functional, the poly-ash accessories are designed to go where other materials can't, making them the perfect complement to cedar, fiber cement and other traditional siding products, as they are suitable for ground and masonry contact.



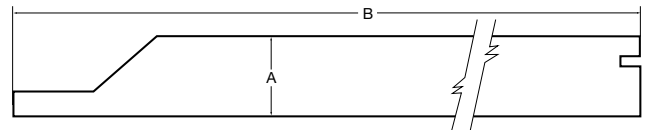
SKIRT BOARD

Provides a decorative yet functional way to create the required clearance between siding and grade.

Available Finishes:

- Smooth
- Woodgrain

Nominal Size	Actual Thickness (A)	Actual Width (B)
1 x 6	3/4"	5-1/2"
1 x 8	3/4"	7-1/4"
5/4 x 6	1"	5-1/2"
5/4 x 8	1"	7-1/4"



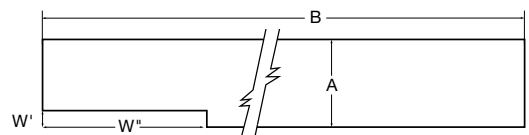
WINDOW POCKET RABBETED TRIM

The rabbeted groove helps trim to sit flush over the window's nailing flange, eliminating the need for cuts or shims.

Available Finishes:

- Smooth
- Woodgrain

Nominal Size	Actual Thickness (A)	Actual Width (B)	Window Pocket (W' x W'')
5/4 x 4	1"	3-1/2"	3/16" x 1-7/8"
5/4 x 6	1"	5-1/2"	3/16" x 1-7/8"
5/4 x 8	1"	7-1/4"	3/16" x 1-7/8"



TruExterior Accessories come pre-primed and do require paint.



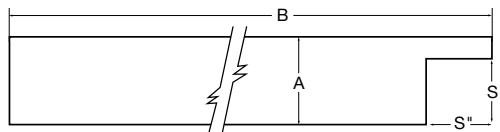
Nominal Size	Actual Thickness (A)	Actual Width (B)	Siding Pocket (S' x S'')
5/4 x 3	1"	2-1/2"	3/4" x 3/4"
5/4 x 4	1"	3-1/2"	3/4" x 3/4"
5/4 x 5	1"	4-1/2"	3/4" x 3/4"
5/4 x 6	1"	5-1/2"	3/4" x 3/4"
5/4 x 8	1"	7-1/4"	3/4" x 3/4"

SIDING POCKET RABBETED TRIM

Perfect for end wall terminations, this trim with a 3/4" siding pocket accepts all TruExterior® Siding profiles.

Available Finishes:

- Smooth
- Woodgrain



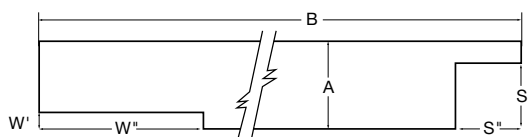
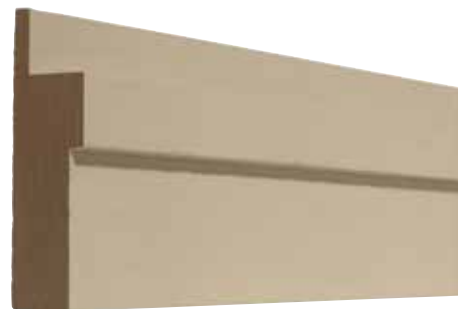
Nominal Size	Actual Thickness (A)	Actual Width (B)	Window Pocket (W' x W'')	Siding Pocket (S' x S'')
5/4 x 4	1"	3-1/2"	3/16" x 1-7/8"	3/4" x 3/4"
5/4 x 6	1"	5-1/2"	3/16" x 1-7/8"	3/4" x 3/4"
5/4 x 8	1"	7-1/4"	3/16" x 1-7/8"	3/4" x 3/4"

WINDOW AND SIDING POCKET RABBETED TRIM

The ultimate accessory to build a neat, professional-looking window surround.

Available Finishes:

- Smooth
- Woodgrain



TruExterior Accessories come pre-primed and do require paint.

TruExterior® Siding & Trim Reference Guide

SUSTAINABILITY

The sustainable properties of TruExterior® Siding & Trim are a result of a combination of proprietary polymer chemistry and highly refined, recovered coal combustion products (fly ash), which are endorsed by the U.S. Green Building Council (USGBC) for use in construction materials.

- Contains a minimum of 70% recycled content—verified by SCS Global Services







CODE LISTINGS


TruExterior® Siding & Trim have undergone rigorous internal and third-party testing to provide building officials, architects, contractors, specifiers, designers and others with reliable, high-performing products.

- California’s Wildland-Urban Interface (WUI) listed—Beadboard, Siding, and Trim
- Texas Department of Insurance (TDI) EC-92—Siding
- Florida Building Code FL17285—Siding
- Intertek CCRR-0300


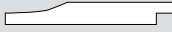
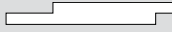
PROJECT ESTIMATOR



V-Rustic		Cove/Dutch Lap	
			
Nominal	Boards per square	Nominal	Boards per square
1 x 6	15	1 x 6	15
1 x 8	11	1 x 8	12
1 x 10	9	1 x 10	9

Channel		Channel Bevel	
			
Nominal	Boards per square	Nominal	Boards per square
1 x 6	15	1 x 6	15
1 x 8	12	1 x 8	11
1 x 10	9	1 x 10	9


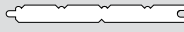
Reversible Shiplap-Nickel Gap	
	
Nominal	Boards per square
1 x 4	24
1 x 6	15
1 x 8	11
1 x 10	9

Craftsman Collection™ Siding

V-Rustic		Cove/Dutch Lap		Channel	
					
Nominal	Actual	Nominal	Actual	Nominal	Actual
1 x 6	11/16" x 5-1/2"	1 x 6	11/16" x 5-1/2"	1 x 6	11/16" x 5-1/2"
1 x 8	11/16" x 7-1/2"	1 x 8	11/16" x 7-1/4"	1 x 8	11/16" x 7-1/4"
1 x 10	11/16" x 9-1/2"	1 x 10	11/16" x 9-1/4"	1 x 10	11/16" x 9-1/4"

Channel Bevel		Reversible Shiplap-Nickel Gap	
			
Nominal	Actual	Nominal	Actual
1 x 6	11/16" x 5-1/2"	1 x 4	11/16" x 3-1/2"
1 x 8	11/16" x 7-1/2"	1 x 6	11/16" x 5-1/2"
1 x 10	11/16" x 9-1/2"	1 x 8	11/16" x 7-1/4"
		1 x 10	11/16" x 9-1/4"





Beadboard

Single		Double	
			
Nominal Size	Actual	Nominal	Actual
5/8 x 4	5/8" x 3-15/32"	5/8 x 8	5/8" x 6-9/16"
5/8 x 6	5/8" x 5-5/16"	5/8 x 12	5/8" x 10-1/4"

Trim

5/8 Trim Sizes		1X Trim Sizes		5/4 Trim Sizes		2X Trim Sizes	
Nominal	Actual	Nominal	Actual	Nominal	Actual	Nominal	Actual
—	—	—	—	—	—	2 x 2	1-1/2" x 1-1/2"
—	—	1 x 3	3/4" x 2-1/2"	5/4 x 3	1" x 2-1/2"	—	—
5/8 x 4	5/8" x 3-1/2"	1 x 4	3/4" x 3-1/2"	5/4 x 4	1" x 3-1/2"	2 x 4	1-1/2" x 3-1/2"
—	—	1 x 5	3/4" x 4-1/2"	5/4 x 5	1" x 4-1/2"	—	—
5/8 x 6	5/8" x 5-1/2"	1 x 6	3/4" x 5-1/2"	5/4 x 6	1" x 5-1/2"	2 x 6	1-1/2" x 5-1/2"
5/8 x 8	5/8" x 7-1/4"	1 x 8	3/4" x 7-1/4"	5/4 x 8	1" x 7-1/4"	2 x 8	1-1/2" x 7-1/4"
5/8 x 10	5/8" x 9-1/4"	1 x 10	3/4" x 9-1/4"	5/4 x 10	1" x 9-1/4"	2 x 10	1-1/2" x 9-1/4"
5/8 x 12	5/8" x 11-1/4"	1 x 12	3/4" x 11-1/4"	5/4 x 12	1" x 11-1/4"	2 x 12	1-1/2" x 11-1/4"

Accessories

Skirt Board		Window Pocket Rabbeted Trim		Siding Pocket Rabbeted Trim		Window and Siding Pocket Rabbeted Trim	
							
Nominal	Actual	Nominal	Actual	Nominal	Actual	Nominal	Actual
1 x 6	3/4" x 5-1/2"	5/4 x 4	1" x 3-1/2"	5/4 x 3	1" x 2-1/2"	5/4 x 4	1" x 3-1/2"
1 x 8	3/4" x 7-1/4"	5/4 x 6	1" x 5-1/2"	5/4 x 4	1" x 3-1/2"	5/4 x 6	1" x 5-1/2"
5/4 x 6	1" x 5-1/2"	5/4 x 8	1" x 7-1/4"	5/4 x 5	1" x 4-1/2"	5/4 x 8	1" x 7-1/4"
5/4 x 8	1" x 7-1/4"			5/4 x 6	1" x 5-1/2"		
				5/4 x 8	1" x 7-1/4"		

Note: All TruExterior® Siding, Trim, Beadboard and Accessory products are available in standard 16' length.



TruExterior[®]

Siding & Trim

TruExterior.com | 800-521-8486

Made in the USA

Westlake
Royal Building Products[™]
WestlakeRoyalBuildingProducts.com

SIDING & ACCESSORIES
TRIM & MOULDINGS
ROOFING
STONE
WINDOWS
OUTDOOR LIVING